



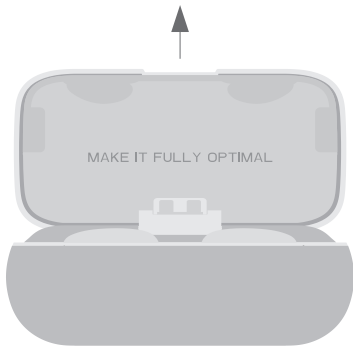
Operation guide

Using the earbuds for the first time

Take out both earbuds from the charging case to trigger automatic pairing. When pairing is successful, the right earbud indicator will flash, signifying the earbuds are ready to pair with your device.

Follow the steps outlined on the next page to pair the earbuds with your Bluetooth device.

NOTE: Please keep the earbuds in close proximity during this process to ensure fast and accurate pairing.



Pairing with a Bluetooth device for the first time

Check to make sure Bluetooth is active on your device and the device is able to discover new devices. Take both earbuds from the charging case, and connect to mifo_O5². The earbuds will provide an audio prompt indicating pairing is successful.

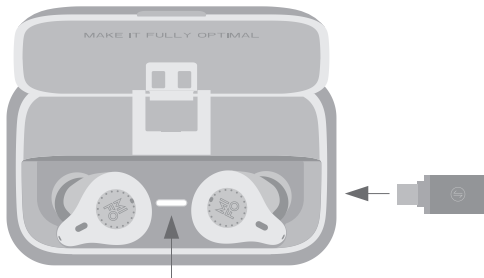


Charging case power indicator

The charging case includes a primary indicator light centered between the left and right earbud charging ports to signal remaining case power. The indicator light will activate for several seconds when an earbud is placed into the case, and automatically turn off after a short period of time. By noting the color of the light according to the table below, you can quickly determine if the case needs recharging.

NOTE:

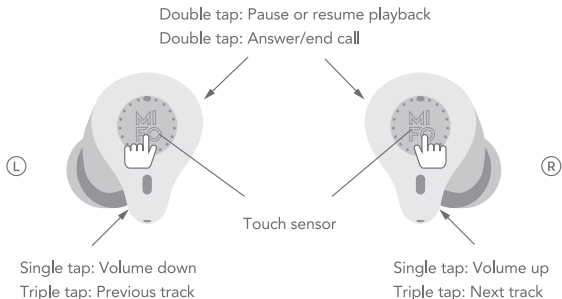
With a USB C to USB adaptor, you can connect to emergency charge for your phone.



- | | |
|--|--|
|  Green light: Remaining power $\geq 60\%$ |  Red light: Remaining power 30%-40% |
|  White light: Remaining power $\geq 40\%$ -60% |  Flashing red light: Remaining power $< 30\%$ |

On-earbud button functions

The earbuds features power saving features, and will automatically turn off if not connected to a device for 3 minutes.



Resume factory Reset: Under charging situation, click the right earbud touch key 5 times, the white light LED flashes quickly 5 times, that means reset successfully. Repeats above operation for left earbud to fulfil left earbud reset.

NOTE: After the two earbuds have been reset successfully, please take out the right earbuds first, then left one and keep the earbuds in close proximity during this process to ensure fast and accurate pairing.

Important information about the earbuds

Please read the below information regarding the care of your product and your safety.

- ① Loud sounds may cause hearing loss. Maintain a safe listening volume and duration. Consult your physician to understand the appropriate volume and duration to avoid hearing loss.
- ② Maintain awareness of your surroundings. Earbuds may block ambient noise.
- ③ Do not use this product while operating a vehicle or heavy machinery.
- ④ Keep out of reach of children.
- ⑤ Not rated for use in dishwasher, laundry machine, or other cleaning devices.
- ⑥ If ear pain or discomfort resulted from the use of this product, please stop using and immediately consult a physician.
- ⑦ Do not store at temperatures below -15 degree C (5 degrees F) or above 55 degrees C (131 degrees F).

FCC Compliance Statement

This device complies with Part 15 of the FCC Rules. Operation is subject to the following two conditions:

(1) this device may not cause harmful interference, and (2) this device must accept any interference received, including interference that may cause undesired operation.

NOTE: This equipment has been tested and found to comply with the limits for a Class B digital device, pursuant to part 15 of the FCC Rules. These limits are designed to provide reasonable protection against harmful interference in a residential installation. This equipment generates uses and can radiate radio frequency energy and, if not installed and used in accordance with the instructions, may cause harmful interference to radio communications. However, there is no guarantee that interference will not occur in a particular installation. If this equipment does cause harmful interference to radio or television reception, which can be determined by turning the equipment off and on, the user is encouraged to try to correct the interference by one or more of the following measures:

- Reorient or relocate the receiving antenna.
- Increase the separation between the equipment and receiver.
- Connect the equipment into an outlet on a circuit different from that to which the receiver is connected.
- Consult the dealer or an experienced radio/TV technician for help.

Changes or modifications not expressly approved by the party responsible for compliance could void the user's authority to operate the equipment.



DESIGNED AND MADE BY

Mifo Technology Co.,Ltd.

support@fiitii.com support@mifo.hk

www.fiitii.com

PN: Q52S003